



Princes Gardens, West Acton, London W3 0LT

Price £925,000 Freehold - No Chain

A 4-bedroom Tudor-style terraced property arranged over three floors with a front garden, rear lawn garden of approx 53ft and garage at the rear.

The entrance hall leads on to 2 reception rooms with the rear reception having access to the rear garden, fitted kitchen and cloakroom.

On the first-floor are 3 bedrooms and a family bathroom. The second floor has a bedroom, bathroom and eaves storage.

There are front and rear gardens. The rear garden has rear access. The garage is at the rear of the property which leads on to a service road.

Situated on the favoured **Hanger Hill Garden Estate** a conservation area, with access to both **West Acton** and **North Ealing** stations both with local shopping facilities as well as **Ealing Broadway** station with Elizabeth Line connection & town centre and the M4 & M40 motorways.

Well-placed for local schools including West Acton Primary, Ellen Wilkinson High, The Japanese School, Twyford CoFE High and Ada Lovelace CoFE High.

Princes Gardens, London, W3

Approximate Area = 1395 sq ft / 129.5 sq m

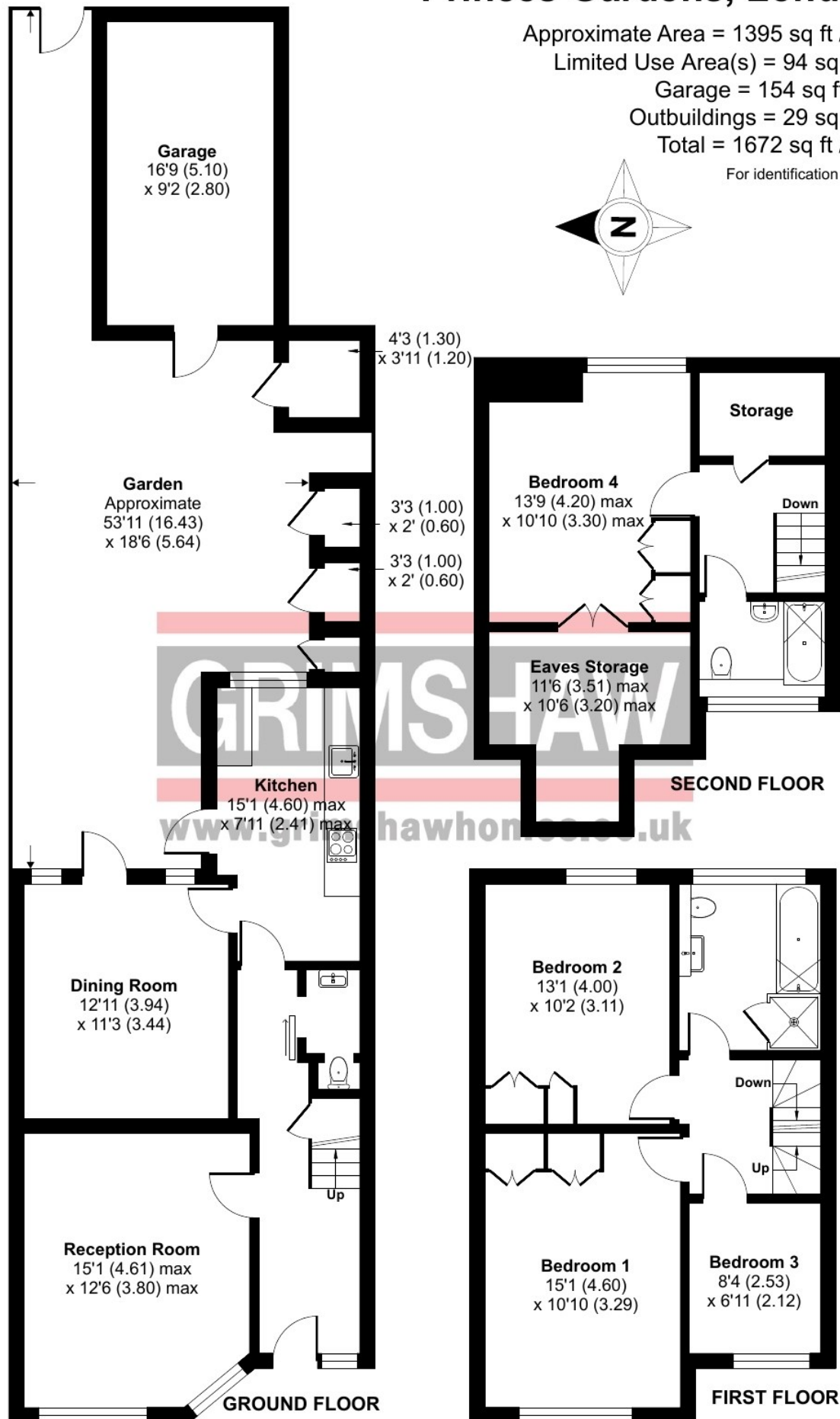
Limited Use Area(s) = 94 sq ft / 8.7 sq m

Garage = 154 sq ft / 14.3 sq m

Outbuildings = 29 sq ft / 2.6 sq m

Total = 1672 sq ft / 155.2 sq m

For identification only - Not to scale







EPC Rating = C

Council tax band = G £3,401.70 for current financial year 2025-2026

Local authority: London Borough of Ealing

Parking: Brick garage at the rear - CPZ area West Acton zone Z

Accessibility: Internal staircase

Connected services and utilities: Mains water and drainage, gas heating and radiators, electricity, system boiler, mains gas, Broadband connected, loft boarded and is a bedroom

Flood risk: -

Surface water very low risk which means less than 0.1% chance of a flood each year.

Rivers and sea very low risk which means less than 0.1% chance of a flood each year.

All subject to confirmation

VIEWING BY APPOINTMENT - All negotiations should be conducted through Grimshaw & Company, who will be pleased to arrange appointments and provide further information.

Any reference to the term "period" denotes period-style. Services, heating, appliances, any security and drainage systems have not been tested. Internal photographs are reproduced for general information only and it must not be inferred that any item shown therein is included with the property. Where double-glazing is mentioned, it must not be inferred that each and every door and window in the property is double-glazed. Trade Names: Where trade names are mentioned, you are advised to verify these with the vendor to your own satisfaction. All property measurements are approximate and have been taken with an electronic tape into bays and alcoves as appropriate. These particulars do not form part of any offer or contract nor can their accuracy be relied upon by purchasers, who should satisfy themselves by inspection or otherwise. Neither Grimshaw & Company nor any person in their employment has any authority to make or give any warranty whatever in relation to any property. No responsibility can be accepted for any loss of expenses incurred in viewing in relation to any property.

14.07.2025 Ref: 9988

Grimshaw and Co, 5 Station Parade, Ealing Common, London W5 3LD